

Since 2015, students throughout Nevada have been sharing their experiences in school through the Nevada School Climate / Social Emotional Learning (NV-SCSEL) survey. This survey is intended to help schools and districts throughout Nevada understand the experiences of students, directly from students in order to assist schools in their school improvement planning. Climate change works best when students and school staff commit to learning how to change climate together. Thus the students themselves are essential to further engage with when addressing climate in the school improvement process and this data gives a foundation for those conversations to occur.

The topics covered by the survey – cultural and linguistic competence, physical safety, emotional safety, relationships, social and emotional competencies, and bullying – represent the priorities we all share for building positive school climates for the children of Nevada. This report contains NV-SCSEL survey trend data for your school that can be used to help your school’s community examine the experiences of students over time across these important dimensions. It is our hope that you use the information in this report as a tool for continuing school improvement efforts. We also encourage you to review the [School Climate Improvement Resource Package](#) developed by the U.S. Department of Education that includes a suite of free resources to assist schools with their school climate improvement efforts.

### **What’s in this report?**

This report presents trend data for four topics from the NV-SCSEL survey: Cultural and Linguistic Competence, Relationships, Physical Safety, and Emotional Safety for each NV-SCSEL administration that your school participated in. Data are presented as scale scores overall and by student subgroups when there are at least 10 students in a group. Students who did not provide grade information are excluded from analysis. For this report, NV-SCSEL scale scores prior to 2018 were recalibrated to align with updated performance level benchmarks so that scores are directly comparable from year to year.

NV-SCSEL scale scores range from 100-500. These scale scores can be interpreted as:

- 100 - 299 - Least favorable conditions
- 300 - 400 - Favorable conditions
- 401 - 500 - Most favorable conditions

If you have any questions, concerns, or need support around these data, please don’t hesitate to ask our office.

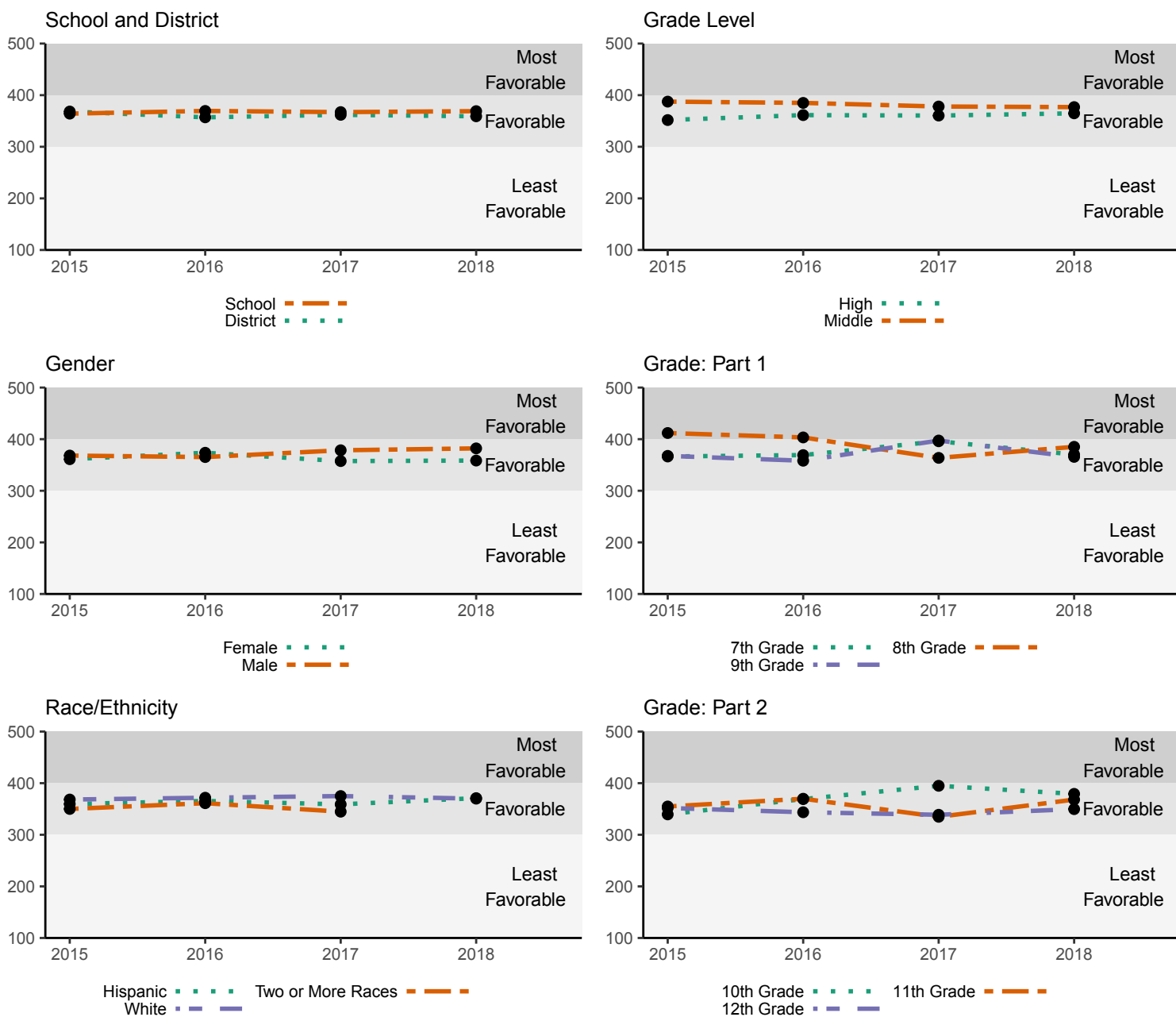


Christy McGill  
Director, Office for a Safe and Respectful Learning Environment

## Cultural and Linguistic Competence Scale

The cultural and linguistic competence scale measures perceptions of how students, their peers, and school staff demonstrate empathy, understanding, and respect for different cultures and ethnic groups. As the U.S. population grows more diverse, schools have begun to recognize how cultural differences influence learning styles, communication, and behavior. Cultural competence refers to the awareness of one’s own cultural identity, an understanding of differences, and the ability to learn and build on the varying cultural and community norms of students and their families. Students who are provided culturally responsive learning environments and culturally meaningful educational experiences often feel more connected to school.

Schools that exhibit a high level of cultural and linguistic competence have staff and students who treat each other equally well, no matter their culture, gender, gender identification, economic status, religion, or newness to the community. These schools typically provide instructional materials that reflect students’ cultural backgrounds.



In **2015**, there were 194 students surveyed in your school. Out of these students the following group scored in the *most favorable category*: 8th Grade. The groups School, High, Middle, Female, Male, 7th Grade, 9th Grade, 10th Grade, 11th Grade, 12th Grade, Hispanic, Two or More Races and White scored in the *favorable category*. No groups scored in the *least favorable category*.

In **2016**, there were 202 students surveyed in your school. Out of these students the following group scored in the *most favorable category*: 8th Grade. The groups School, High, Middle, Female, Male, 7th Grade, 9th Grade, 10th Grade, 11th Grade, 12th Grade, Hispanic, Two or More Races and White scored in the *favorable category*. No groups scored in the *least favorable category*.

In **2017**, there were 166 students surveyed in your school. Out of these students, no groups scored in the *most favorable category*. The groups School, High, Middle, Female, Male, 7th Grade, 8th Grade, 9th Grade, 10th Grade, 11th Grade, 12th Grade, Hispanic, Two or More Races and White scored in the *favorable category*. No groups scored in the *least favorable category*.

In **2018**, there were 162 students surveyed in your school. Out of these students, no groups scored in the *most favorable category*. The groups School, High, Middle, Female, Male, 7th Grade, 8th Grade, 9th Grade, 10th Grade, 11th Grade, 12th Grade, Hispanic and White scored in the *favorable category*. No groups scored in the *least favorable category*.

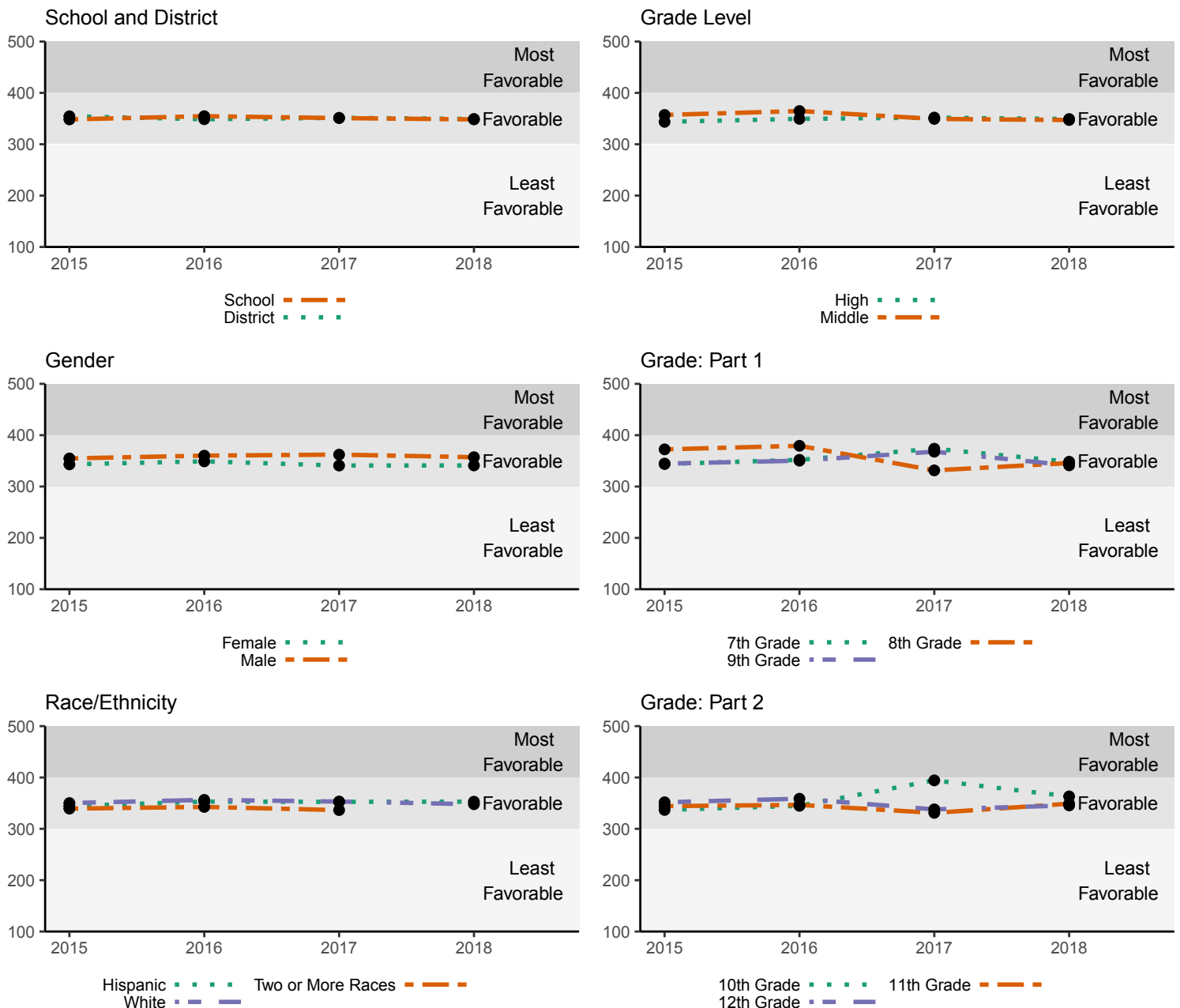
	2015	2016	2017	2018
<b>Agency Level</b>				
School	364	369	367	369
District	368	357	362	359
<b>Grade Level</b>				
High	352	361	360	365
Middle	387	385	378	377
<b>Gender</b>				
Female	361	374	358	359
Male	368	365	378	382
<b>Grade</b>				
7th Grade	366	369	396	370
8th Grade	412	403	364	385
9th Grade	368	358	397	366
10th Grade	340	369	395	379
11th Grade	355	370	335	368
12th Grade	352	344	339	350
<b>Race/Ethnicity</b>				
American Indian or Alaska Native	–	–	–	–
Asian	–	–	–	–
Black or African American	–	–	–	–
Hispanic	360	365	359	371
Native Hawaiian or Pacific Islander	–	–	–	–
Two or More Races	350	361	345	–
White	368	372	375	370

## Relationships

Relationships are the links and interactions between and among students, adults, and peers in the school setting; relationships foster positive social interaction and establish a nurturing environment of trust and support. Sound relationships reinforce existing feelings of connectedness to the school community, and may benefit students who typically do not feel connected to school.

Students who have supportive relationships at school and students who feel connected to their school are more likely to succeed: they have better attendance, grades, test scores, and persistence in school. These students are also less likely to experience emotional problems, substance abuse problems, or resort to violence. Building positive relationships that foster a safe supportive learning environment and student connection to that environment is the responsibility of all who touch a school. The school environment provides a natural setting to foster supportive relationships between and among students, adults, and peers. Relationship-building requires perspectives that embrace positive attitudes and beliefs, cultural and linguistic competence, an understanding of the needs and experiences of others, and an understanding of the school environment.

Schools with strong positive relationships may have students who report that their teachers understand them. Students may report that they can speak with adults in the building about issues. Students also may report that their peers like and respect one another.



In **2015**, there were 194 students surveyed in your school. Out of these students, no groups scored in the *most favorable* category. The groups School, High, Middle, Female, Male, 7th Grade, 8th Grade, 9th Grade, 10th Grade, 11th Grade, 12th Grade, Hispanic, Two or More Races and White scored in the *favorable* category. No groups scored in the *least favorable* category.

In **2016**, there were 202 students surveyed in your school. Out of these students, no groups scored in the *most favorable* category. The groups School, High, Middle, Female, Male, 7th Grade, 8th Grade, 9th Grade, 10th Grade, 11th Grade, 12th Grade, Hispanic, Two or More Races and White scored in the *favorable* category. No groups scored in the *least favorable* category.

In **2017**, there were 166 students surveyed in your school. Out of these students, no groups scored in the *most favorable* category. The groups School, High, Middle, Female, Male, 7th Grade, 8th Grade, 9th Grade, 10th Grade, 11th Grade, 12th Grade, Hispanic, Two or More Races and White scored in the *favorable* category. No groups scored in the *least favorable* category.

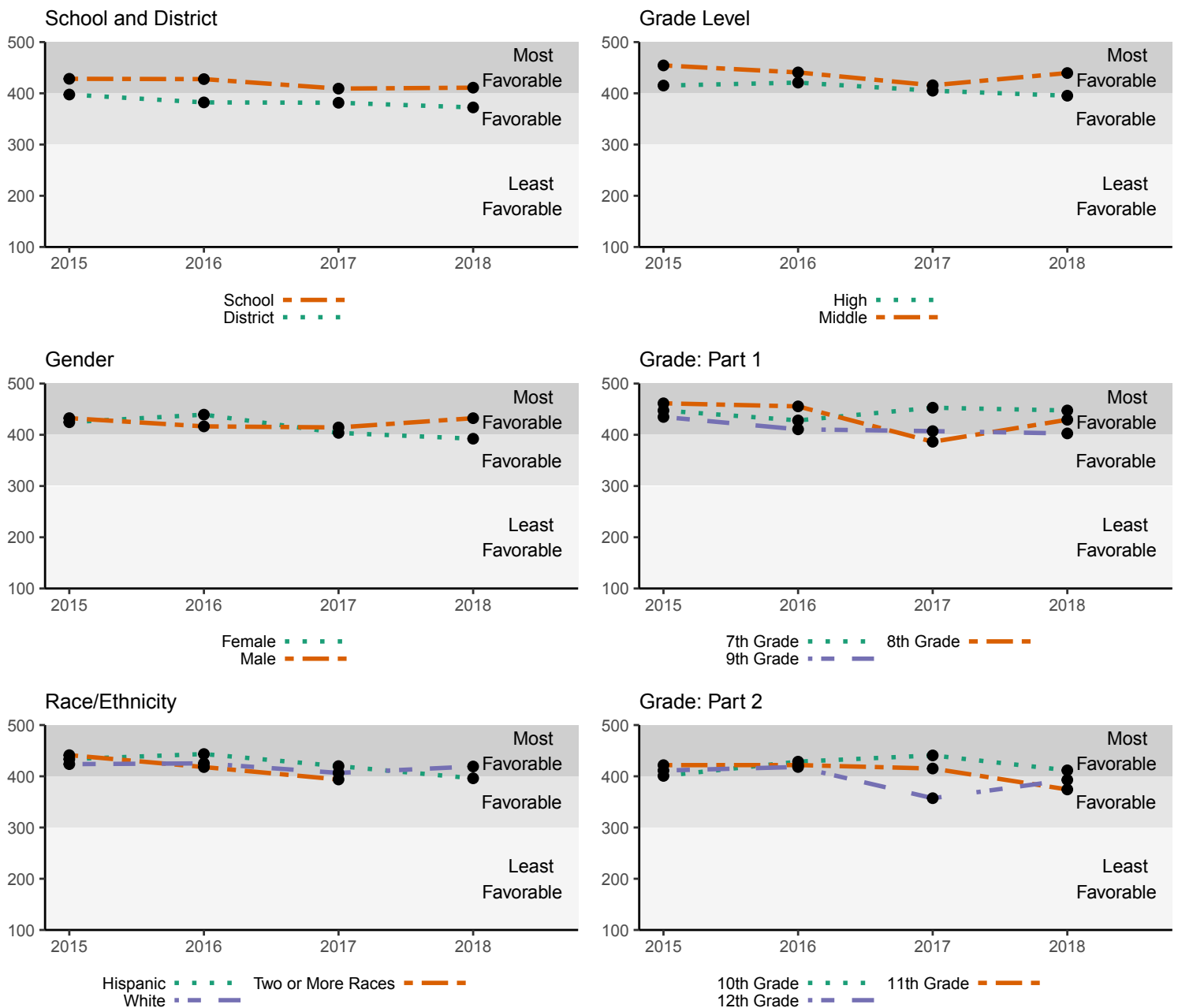
In **2018**, there were 162 students surveyed in your school. Out of these students, no groups scored in the *most favorable* category. The groups School, High, Middle, Female, Male, 7th Grade, 8th Grade, 9th Grade, 10th Grade, 11th Grade, 12th Grade, Hispanic and White scored in the *favorable* category. No groups scored in the *least favorable* category.

	2015	2016	2017	2018
<b>Agency Level</b>				
School	348	355	351	348
District	354	349	351	349
<b>Grade Level</b>				
High	344	349	352	349
Middle	357	365	349	347
<b>Gender</b>				
Female	343	349	341	341
Male	355	360	362	357
<b>Grade</b>				
7th Grade	344	352	374	348
8th Grade	372	379	331	346
9th Grade	345	350	368	341
10th Grade	337	345	394	363
11th Grade	344	347	331	349
12th Grade	352	359	338	346
<b>Race/Ethnicity</b>				
American Indian or Alaska Native	–	–	–	–
Asian	–	–	–	–
Black or African American	–	–	–	–
Hispanic	344	353	352	353
Native Hawaiian or Pacific Islander	–	–	–	–
Two or More Races	339	343	336	–
White	350	356	353	348

## Physical Safety

Physical safety refers to the protection of all stakeholders—including families, caregivers, students, school staff, and the community—from fear of or actual exposure to physical violence, theft, intimidation, intruders, harsh punishment, and weapons. In order to establish a secure learning environment, physical safety is paramount. For students to learn, they need to feel safe. It is essential that all students attend schools that provide a physically safe environment where they can thrive and fully engage in their studies with neither distraction nor worry about safety concerns. Students who are not fearful or worried feel more connected to their school and care more about their educational experience. Physical safety is related to higher academic performance, fewer risky behaviors, and lower dropout rates. Schools and communities can implement policies that promote student safety and prevent violence. School-based approaches such as conflict resolution and peer mediation are common. Connecting at-risk youth with local community organizations working to stop violence is another evidence-based strategy.

In schools with a high degree of physical safety, students may report feeling safe within the school building as well as while traveling between school and home. Students do not report experiencing threats or theft, and report that their peers respect school property. They trust that adults will take threats and bullying seriously and will work to protect students.



In **2015**, there were 194 students surveyed in your school. Out of these students the following groups scored in the *most favorable category*: School, High, Middle, Female, Male, 7th Grade, 8th Grade, 9th Grade, 10th Grade, 11th Grade, 12th Grade, Hispanic, Two or More Races and White. No groups scored in the *favorable* category. No groups scored in the *least favorable* category.

In **2016**, there were 202 students surveyed in your school. Out of these students the following groups scored in the *most favorable category*: School, High, Middle, Female, Male, 7th Grade, 8th Grade, 9th Grade, 10th Grade, 11th Grade, 12th Grade, Hispanic, Two or More Races and White. No groups scored in the *favorable* category. No groups scored in the *least favorable* category.

In **2017**, there were 166 students surveyed in your school. Out of these students the following groups scored in the *most favorable category*: School, High, Middle, Female, Male, 7th Grade, 9th Grade, 10th Grade, 11th Grade, Hispanic and White. The groups 8th Grade, 12th Grade and Two or More Races scored in the *favorable* category. No groups scored in the *least favorable* category.

In **2018**, there were 162 students surveyed in your school. Out of these students the following groups scored in the *most favorable category*: School, Middle, Male, 7th Grade, 8th Grade, 9th Grade, 10th Grade and White. The groups High, Female, 11th Grade, 12th Grade and Hispanic scored in the *favorable* category. No groups scored in the *least favorable* category.

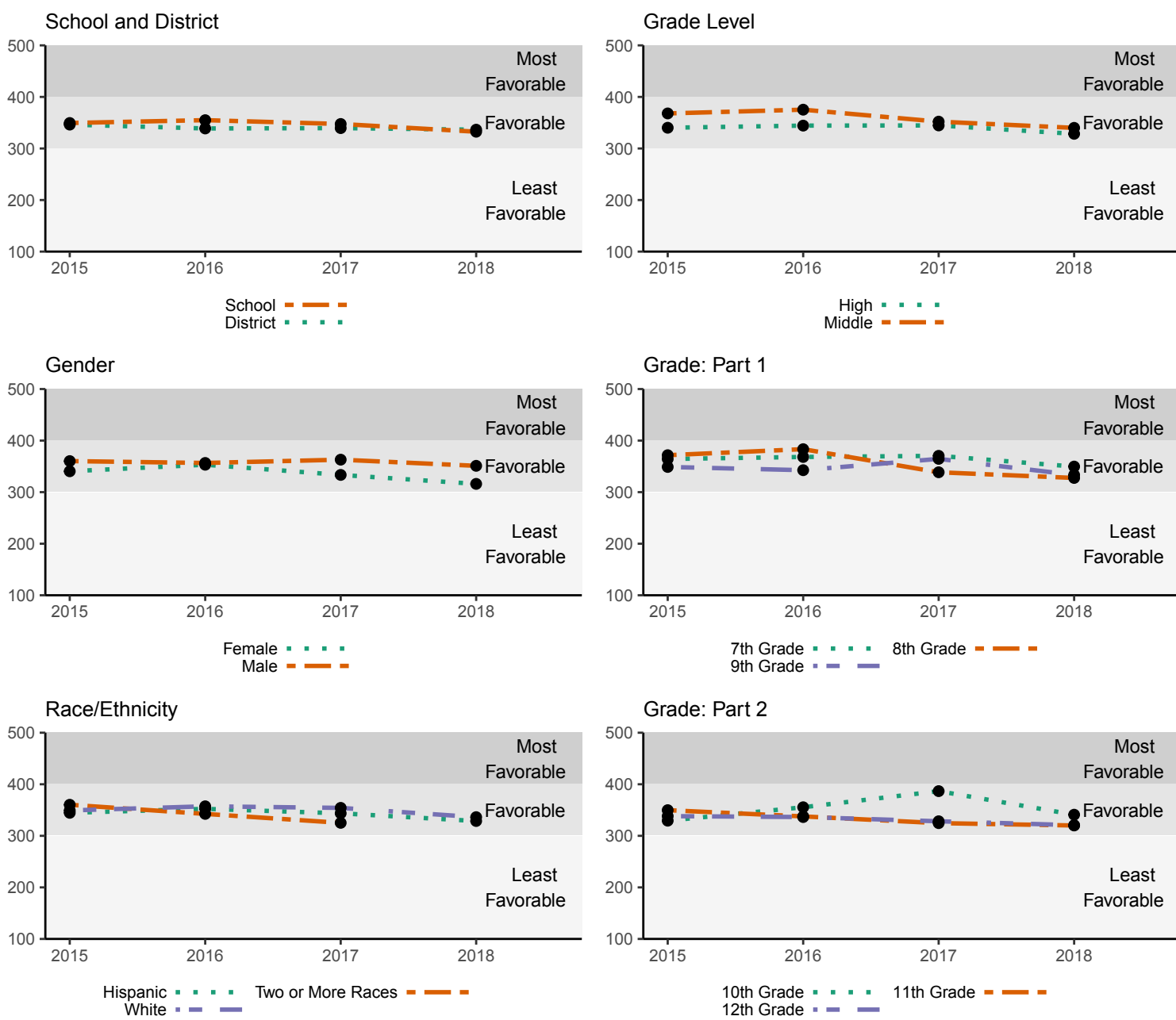
	2015	2016	2017	2018
<b>Agency Level</b>				
School	428	428	409	411
District	398	382	382	372
<b>Grade Level</b>				
High	415	421	405	395
Middle	454	441	416	440
<b>Gender</b>				
Female	425	439	404	392
Male	432	416	414	432
<b>Grade</b>				
7th Grade	447	428	453	448
8th Grade	461	456	386	429
9th Grade	435	411	407	403
10th Grade	401	429	441	412
11th Grade	422	422	415	374
12th Grade	411	418	357	393
<b>Race/Ethnicity</b>				
American Indian or Alaska Native	–	–	–	–
Asian	–	–	–	–
Black or African American	–	–	–	–
Hispanic	434	443	420	396
Native Hawaiian or Pacific Islander	–	–	–	–
Two or More Races	441	418	394	–
White	424	425	407	419

## Emotional Safety

Emotional safety refers to the range of experiences in which an individual feels open to express emotions, trusts those around him, exhibits confidence, and feels excited to try something new. A student who feels emotionally safe does not dread humiliation, embarrassment, or shame. A sense of emotional safety stems from consistent attention to each student's emotional needs.

Emotionally safe learning environments can be achieved when individuals in the school building balance authenticity and care without sacrificing the boundaries and hierarchy that keep students safe. Students need to feel freedom from harsh consequences, bullying, and mistreatment from adults and peers. Positive behavioral interventions and supports help engender emotionally safe environments, where respect is encouraged and students are intentionally taught pro-social skills.

Schools that demonstrate an emotionally safe environment may have students who report strong feelings of acceptance and belonging. Students also may feel that they get along well with other students. Staff members should continue to ensure strategies that promote emotional safety are consistently implemented schoolwide.





In **2015**, there were 194 students surveyed in your school. Out of these students, no groups scored in the *most favorable* category. The groups School, High, Middle, Female, Male, 7th Grade, 8th Grade, 9th Grade, 10th Grade, 11th Grade, 12th Grade, Hispanic, Two or More Races and White scored in the *favorable* category. No groups scored in the *least favorable* category.

In **2016**, there were 202 students surveyed in your school. Out of these students, no groups scored in the *most favorable* category. The groups School, High, Middle, Female, Male, 7th Grade, 8th Grade, 9th Grade, 10th Grade, 11th Grade, 12th Grade, Hispanic, Two or More Races and White scored in the *favorable* category. No groups scored in the *least favorable* category.

In **2017**, there were 166 students surveyed in your school. Out of these students, no groups scored in the *most favorable* category. The groups School, High, Middle, Female, Male, 7th Grade, 8th Grade, 9th Grade, 10th Grade, 11th Grade, 12th Grade, Hispanic, Two or More Races and White scored in the *favorable* category. No groups scored in the *least favorable* category.

In **2018**, there were 162 students surveyed in your school. Out of these students, no groups scored in the *most favorable* category. The groups School, High, Middle, Female, Male, 7th Grade, 8th Grade, 9th Grade, 10th Grade, 11th Grade, 12th Grade, Hispanic and White scored in the *favorable* category. No groups scored in the *least favorable* category.

	2015	2016	2017	2018
<b>Agency Level</b>				
School	349	355	348	333
District	346	339	340	336
<b>Grade Level</b>				
High	340	344	345	328
Middle	368	375	352	340
<b>Gender</b>				
Female	340	353	333	316
Male	360	357	363	351
<b>Grade</b>				
7th Grade	364	368	370	350
8th Grade	372	383	339	328
9th Grade	349	343	365	333
10th Grade	329	355	387	341
11th Grade	350	338	325	320
12th Grade	338	336	328	321
<b>Race/Ethnicity</b>				
American Indian or Alaska Native	–	–	–	–
Asian	–	–	–	–
Black or African American	–	–	–	–
Hispanic	345	352	344	329
Native Hawaiian or Pacific Islander	–	–	–	–
Two or More Races	360	343	325	–
White	349	357	354	336