

Since 2015, students throughout Nevada have been sharing their experiences in school through the Nevada School Climate / Social Emotional Learning (NV-SCSEL) survey. This survey is intended to help schools and districts throughout Nevada understand the experiences of students, directly from students in order to assist schools in their school improvement planning. Climate change works best when students and school staff commit to learning how to change climate together. Thus the students themselves are essential to further engage with when addressing climate in the school improvement process and this data gives a foundation for those conversations to occur.

The topics covered by the survey – cultural and linguistic competence, physical safety, emotional safety, relationships, social and emotional competencies, and bullying – represent the priorities we all share for building positive school climates for the children of Nevada. This report contains NV-SCSEL survey trend data for your school that can be used to help your school’s community examine the experiences of students over time across these important dimensions. It is our hope that you use the information in this report as a tool for continuing school improvement efforts. We also encourage you to review the [School Climate Improvement Resource Package](#) developed by the U.S. Department of Education that includes a suite of free resources to assist schools with their school climate improvement efforts.

What’s in this report?

This report presents trend data for four topics from the NV-SCSEL survey: Cultural and Linguistic Competence, Relationships, Physical Safety, and Emotional Safety for each NV-SCSEL administration that your school participated in. Data are presented as scale scores overall and by student subgroups when there are at least 10 students in a group. Students who did not provide grade information are excluded from analysis. For this report, NV-SCSEL scale scores prior to 2018 were recalibrated to align with updated performance level benchmarks so that scores are directly comparable from year to year.

NV-SCSEL scale scores range from 100-500. These scale scores can be interpreted as:

- 100 - 299 - Least favorable conditions
- 300 - 400 - Favorable conditions
- 401 - 500 - Most favorable conditions

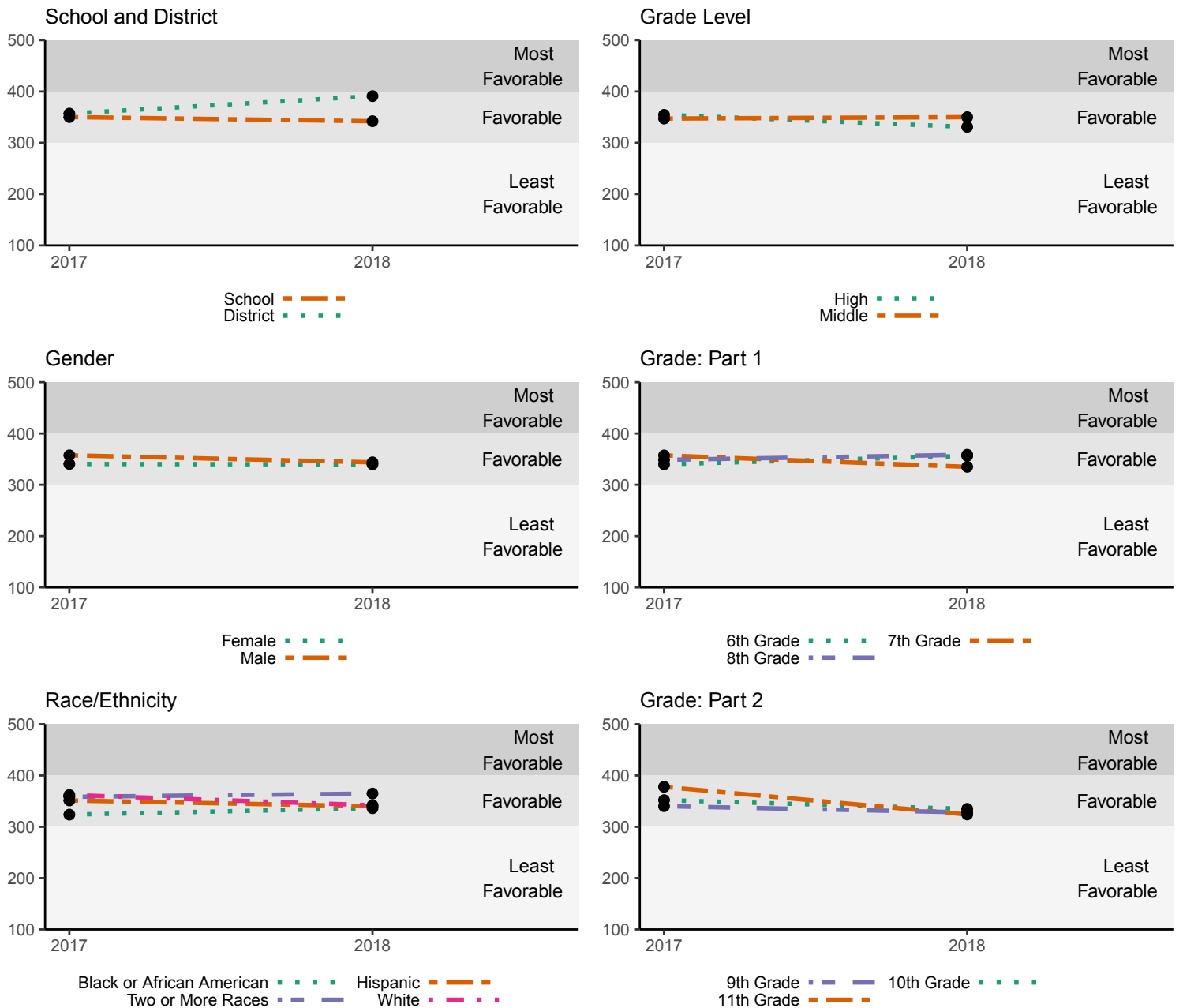
If you have any questions, concerns, or need support around these data, please don’t hesitate to ask our office.

Christy McGill
Director, Office for a Safe and Respectful Learning Environment

Cultural and Linguistic Competence Scale

The cultural and linguistic competence scale measures perceptions of how students, their peers, and school staff demonstrate empathy, understanding, and respect for different cultures and ethnic groups. As the U.S. population grows more diverse, schools have begun to recognize how cultural differences influence learning styles, communication, and behavior. Cultural competence refers to the awareness of one’s own cultural identity, an understanding of differences, and the ability to learn and build on the varying cultural and community norms of students and their families. Students who are provided culturally responsive learning environments and culturally meaningful educational experiences often feel more connected to school.

Schools that exhibit a high level of cultural and linguistic competence have staff and students who treat each other equally well, no matter their culture, gender, gender identification, economic status, religion, or newness to the community. These schools typically provide instructional materials that reflect students’ cultural backgrounds.



In **2017**, there were 252 students surveyed in your school. Out of these students, no groups scored in the *most favorable* category. The groups School, High, Middle, Female, Male, 6th Grade, 7th Grade, 8th Grade, 9th Grade, 10th Grade, 11th Grade, 12th Grade, Black or African American, Hispanic, Two or More Races and White scored in the *favorable* category. No groups scored in the *least favorable* category.

In **2018**, there were 337 students surveyed in your school. Out of these students, no groups scored in the *most favorable* category. The groups School, High, Middle, Female, Male, 6th Grade, 7th Grade, 8th Grade, 9th Grade, 10th Grade, 11th Grade, Black or African American, Hispanic, Two or More Races and White scored in the *favorable* category. No groups scored in the *least favorable* category.

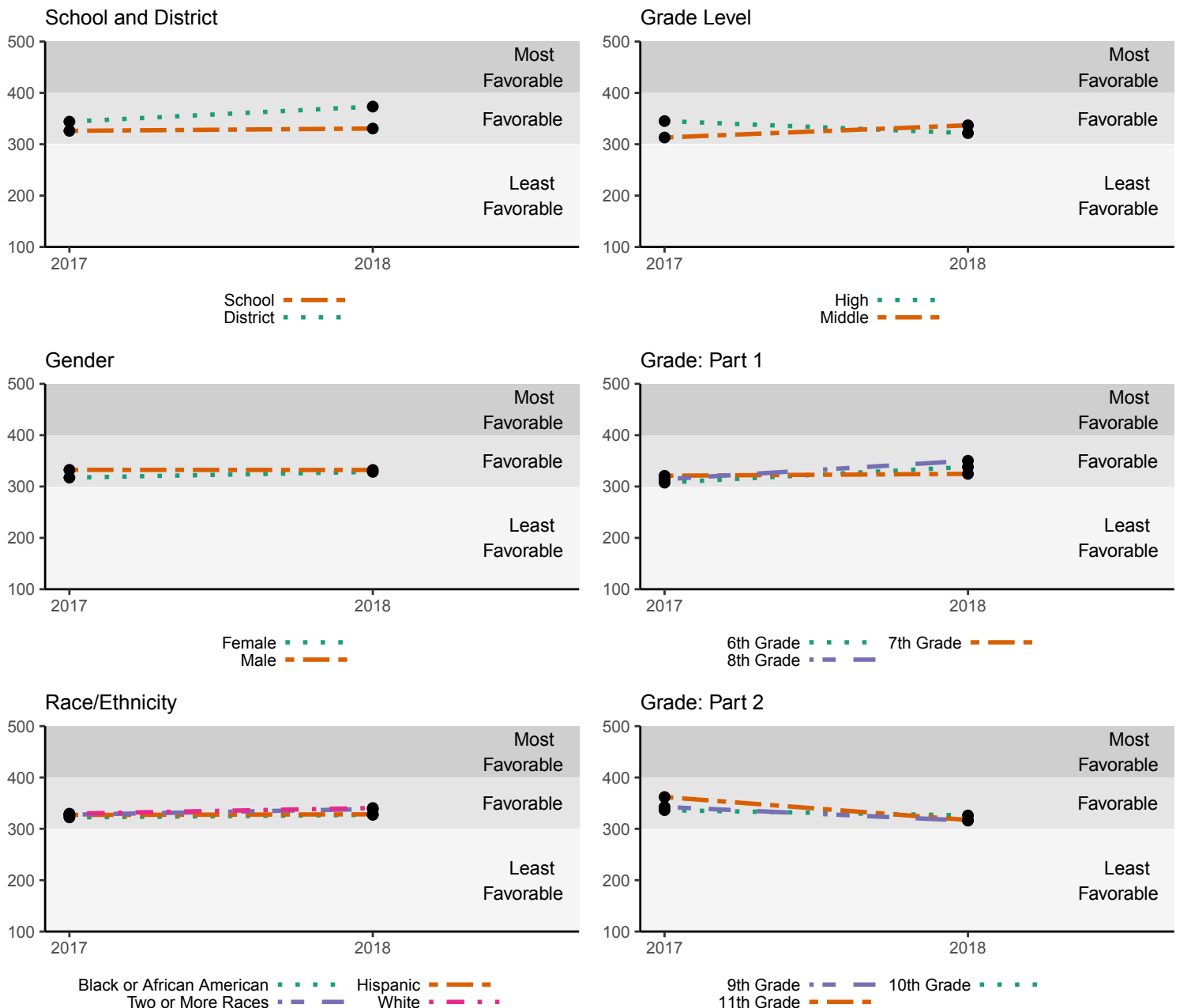
	2017	2018
Agency Level		
School	350	342
District	357	391
Grade Level		
High	355	331
Middle	347	350
Gender		
Female	341	340
Male	358	344
Grade		
6th Grade	340	356
7th Grade	357	335
8th Grade	349	359
9th Grade	340	328
10th Grade	352	335
11th Grade	378	324
12th Grade	358	–
Race/Ethnicity		
American Indian or Alaska Native	–	–
Asian	–	–
Black or African American	324	336
Hispanic	351	340
Native Hawaiian or Pacific Islander	–	–
Two or More Races	358	365
White	362	342

Relationships

Relationships are the links and interactions between and among students, adults, and peers in the school setting; relationships foster positive social interaction and establish a nurturing environment of trust and support. Sound relationships reinforce existing feelings of connectedness to the school community, and may benefit students who typically do not feel connected to school.

Students who have supportive relationships at school and students who feel connected to their school are more likely to succeed: they have better attendance, grades, test scores, and persistence in school. These students are also less likely to experience emotional problems, substance abuse problems, or resort to violence. Building positive relationships that foster a safe supportive learning environment and student connection to that environment is the responsibility of all who touch a school. The school environment provides a natural setting to foster supportive relationships between and among students, adults, and peers. Relationship-building requires perspectives that embrace positive attitudes and beliefs, cultural and linguistic competence, an understanding of the needs and experiences of others, and an understanding of the school environment.

Schools with strong positive relationships may have students who report that their teachers understand them. Students may report that they can speak with adults in the building about issues. Students also may report that their peers like and respect one another.



In **2017**, there were 252 students surveyed in your school. Out of these students, no groups scored in the *most favorable* category. The groups School, High, Middle, Female, Male, 6th Grade, 7th Grade, 8th Grade, 9th Grade, 10th Grade, 11th Grade, 12th Grade, Black or African American, Hispanic, Two or More Races and White scored in the *favorable* category. No groups scored in the *least favorable* category.

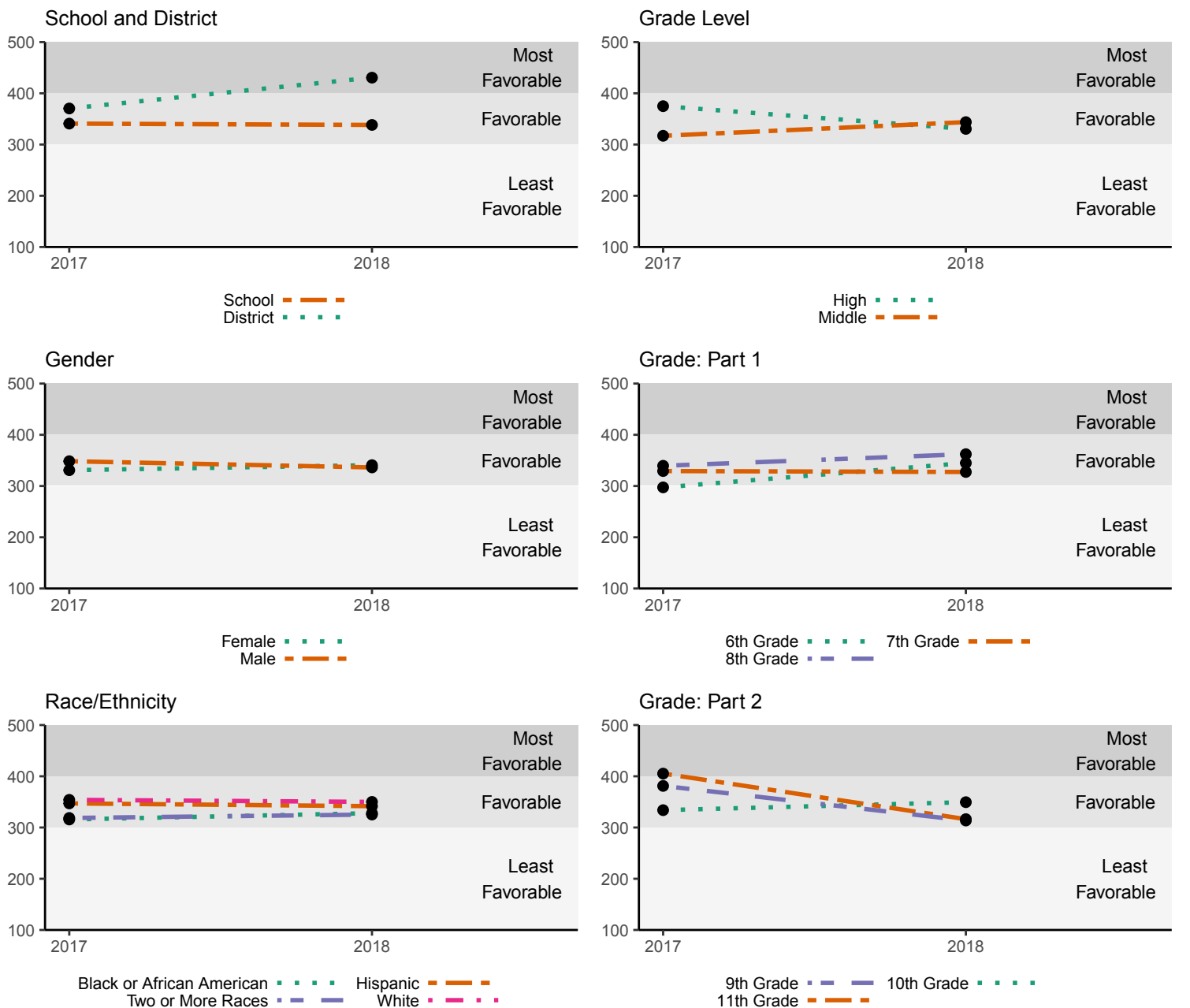
In **2018**, there were 337 students surveyed in your school. Out of these students, no groups scored in the *most favorable* category. The groups School, High, Middle, Female, Male, 6th Grade, 7th Grade, 8th Grade, 9th Grade, 10th Grade, 11th Grade, Black or African American, Hispanic, Two or More Races and White scored in the *favorable* category. No groups scored in the *least favorable* category.

	2017	2018
Agency Level		
School	326	331
District	344	373
Grade Level		
High	345	322
Middle	313	337
Gender		
Female	317	329
Male	332	332
Grade		
6th Grade	308	338
7th Grade	321	325
8th Grade	314	350
9th Grade	343	316
10th Grade	336	326
11th Grade	362	317
12th Grade	337	–
Race/Ethnicity		
American Indian or Alaska Native	–	–
Asian	–	–
Black or African American	322	327
Hispanic	327	328
Native Hawaiian or Pacific Islander	–	–
Two or More Races	327	339
White	330	341

Physical Safety

Physical safety refers to the protection of all stakeholders—including families, caregivers, students, school staff, and the community—from fear of or actual exposure to physical violence, theft, intimidation, intruders, harsh punishment, and weapons. In order to establish a secure learning environment, physical safety is paramount. For students to learn, they need to feel safe. It is essential that all students attend schools that provide a physically safe environment where they can thrive and fully engage in their studies with neither distraction nor worry about safety concerns. Students who are not fearful or worried feel more connected to their school and care more about their educational experience. Physical safety is related to higher academic performance, fewer risky behaviors, and lower dropout rates. Schools and communities can implement policies that promote student safety and prevent violence. School-based approaches such as conflict resolution and peer mediation are common. Connecting at-risk youth with local community organizations working to stop violence is another evidence-based strategy.

In schools with a high degree of physical safety, students may report feeling safe within the school building as well as while traveling between school and home. Students do not report experiencing threats or theft, and report that their peers respect school property. They trust that adults will take threats and bullying seriously and will work to protect students.



In **2017**, there were 252 students surveyed in your school. Out of these students the following group scored in the *most favorable category*: 11th Grade. The groups School, High, Middle, Female, Male, 7th Grade, 8th Grade, 9th Grade, 10th Grade, 12th Grade, Black or African American, Hispanic, Two or More Races and White scored in the *favorable category*. Finally, the following group of students scored in the *least favorable category*: 6th Grade.

In **2018**, there were 337 students surveyed in your school. Out of these students, no groups scored in the *most favorable category*. The groups School, High, Middle, Female, Male, 6th Grade, 7th Grade, 8th Grade, 9th Grade, 10th Grade, 11th Grade, Black or African American, Hispanic, Two or More Races and White scored in the *favorable category*. No groups scored in the *least favorable category*.

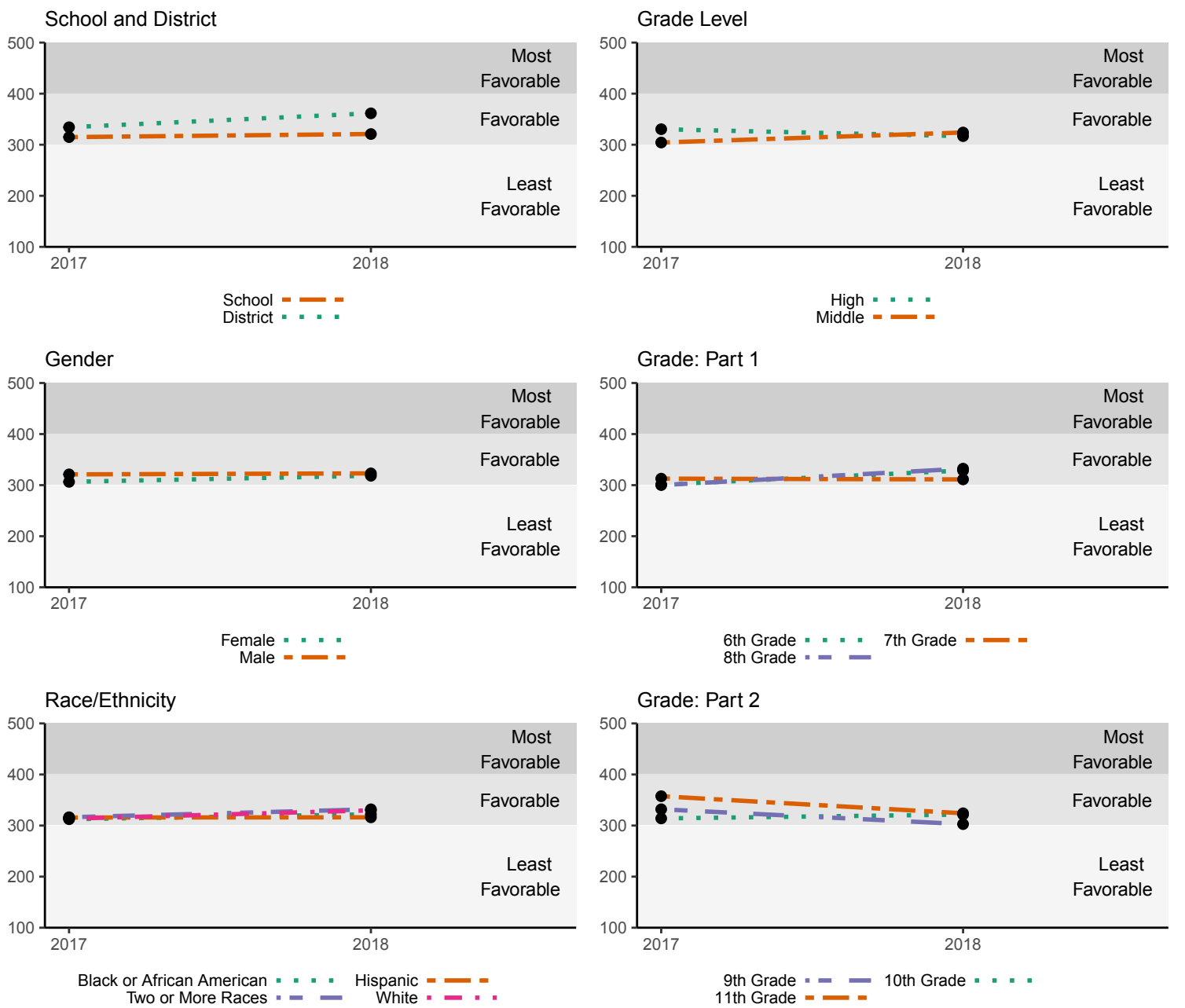
	2017	2018
Agency Level		
School	341	338
District	370	431
Grade Level		
High	375	331
Middle	317	344
Gender		
Female	331	341
Male	348	336
Grade		
6th Grade	297	345
7th Grade	329	327
8th Grade	340	362
9th Grade	381	314
10th Grade	334	349
11th Grade	405	316
12th Grade	374	–
Race/Ethnicity		
American Indian or Alaska Native	–	–
Asian	–	–
Black or African American	316	328
Hispanic	347	342
Native Hawaiian or Pacific Islander	–	–
Two or More Races	319	325
White	354	350

Emotional Safety

Emotional safety refers to the range of experiences in which an individual feels open to express emotions, trusts those around him, exhibits confidence, and feels excited to try something new. A student who feels emotionally safe does not dread humiliation, embarrassment, or shame. A sense of emotional safety stems from consistent attention to each student's emotional needs.

Emotionally safe learning environments can be achieved when individuals in the school building balance authenticity and care without sacrificing the boundaries and hierarchy that keep students safe. Students need to feel freedom from harsh consequences, bullying, and mistreatment from adults and peers. Positive behavioral interventions and supports help engender emotionally safe environments, where respect is encouraged and students are intentionally taught pro-social skills.

Schools that demonstrate an emotionally safe environment may have students who report strong feelings of acceptance and belonging. Students also may feel that they get along well with other students. Staff members should continue to ensure strategies that promote emotional safety are consistently implemented schoolwide.



In **2017**, there were 252 students surveyed in your school. Out of these students, no groups scored in the *most favorable* category. The groups School, High, Middle, Female, Male, 6th Grade, 7th Grade, 8th Grade, 9th Grade, 10th Grade, 11th Grade, 12th Grade, Black or African American, Hispanic, Two or More Races and White scored in the *favorable* category. No groups scored in the *least favorable* category.

In **2018**, there were 337 students surveyed in your school. Out of these students, no groups scored in the *most favorable* category. The groups School, High, Middle, Female, Male, 6th Grade, 7th Grade, 8th Grade, 9th Grade, 10th Grade, 11th Grade, Black or African American, Hispanic, Two or More Races and White scored in the *favorable* category. No groups scored in the *least favorable* category.

	2017	2018
Agency Level		
School	315	321
District	334	361
Grade Level		
High	330	317
Middle	304	324
Gender		
Female	306	318
Male	321	323
Grade		
6th Grade	301	329
7th Grade	313	311
8th Grade	300	332
9th Grade	332	303
10th Grade	314	322
11th Grade	358	324
12th Grade	307	–
Race/Ethnicity		
American Indian or Alaska Native	–	–
Asian	–	–
Black or African American	312	322
Hispanic	316	316
Native Hawaiian or Pacific Islander	–	–
Two or More Races	316	332
White	314	330